

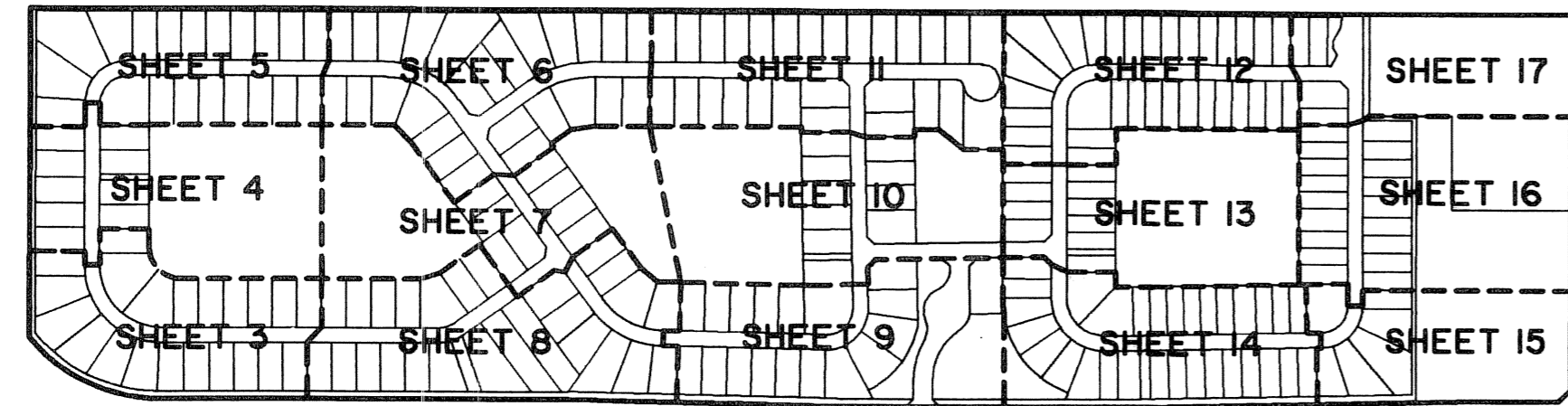
LANIER PROPERTY

LYING IN SECTION 13, TOWNSHIP 44 SOUTH, RANGE 41 EAST,
VILLAGE OF WELLINGTON, PALM BEACH COUNTY, FLORIDA.

SHEET 7 OF 17

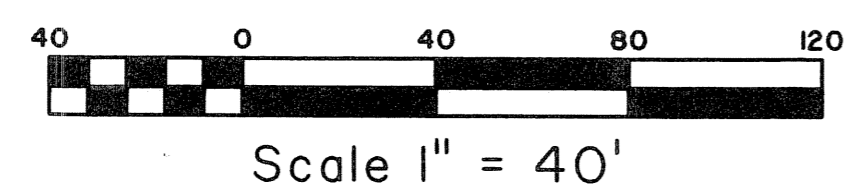
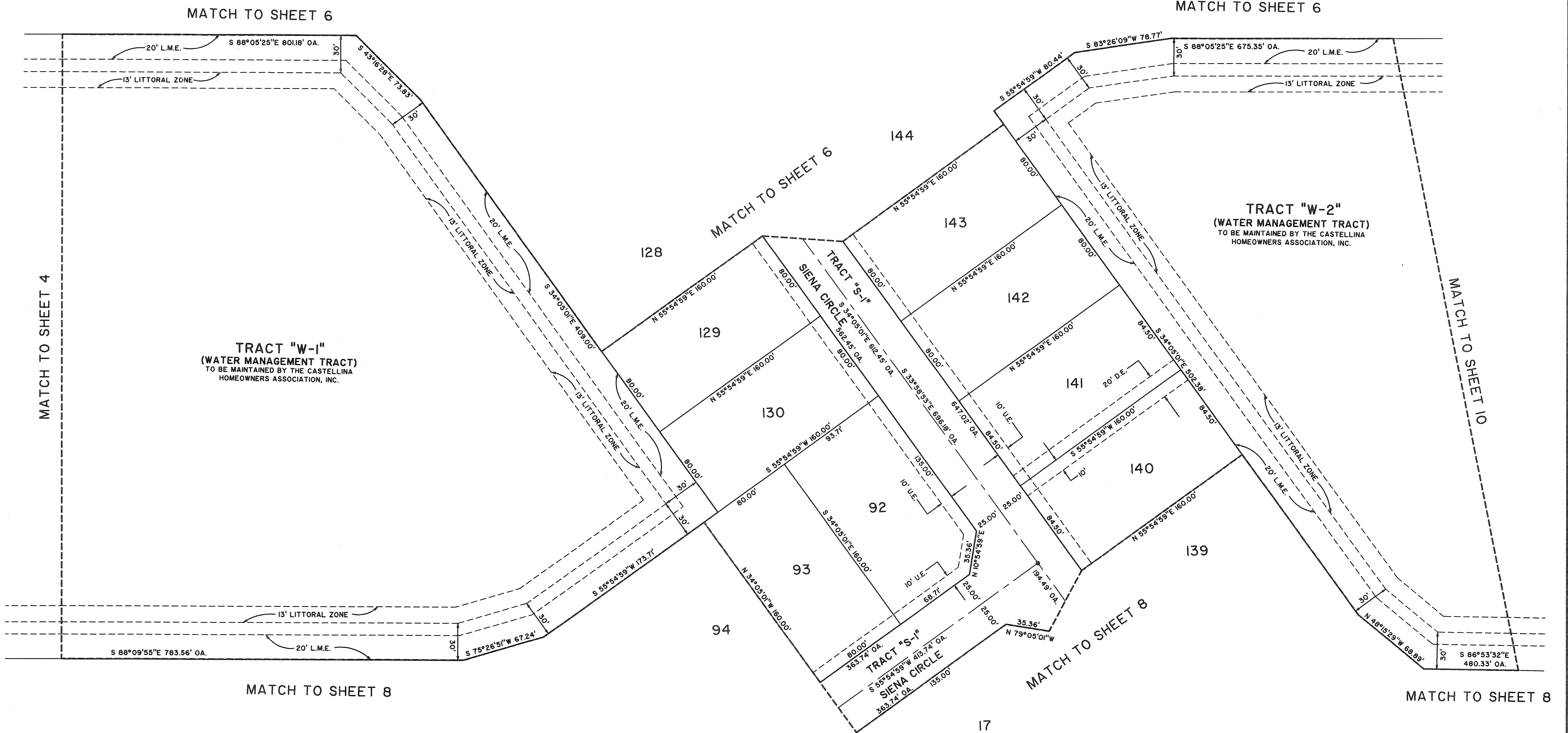
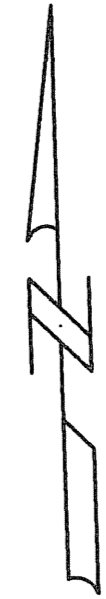
MARCH, 2006

81



KEY MAP
NOT TO SCALE

STATE OF FLORIDA SS
COUNTY OF PALM BEACH
THIS PLAT WAS FILED FOR RECORD AT _____
____ M. THIS ____ DAY OF _____ 2006
AND DULY RECORDED IN PLAT BOOK NO. _____
ON PAGE _____
SHARON R. BOCK,
CLERK AND COMPTROLLER,
PALM BEACH COUNTY
BY _____ D.C.



	Landmark Surveying & Mapping Inc. 1850 Forest Hill Boulevard Ph. (561) 433-5405 Suite 100 W.P.B. Florida LB # 4396
	LANIER PROPERTY